

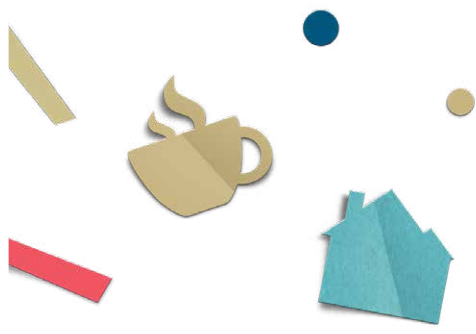


WENDELL FALLS®

BY
NEWLAND

PARADE OF HOMES

SEPTEMBER 30TH—OCTOBER 15TH
WEEKENDS NOON—5PM



FIND YOUR WAY TO HOMES, HAPPY + MORE

It's Parade of Homes season at Wendell Falls. Though you'll find homes are just the beginning. In addition to the six stately Parade homes to tour (use this map to find them!) say hi to Dell the Pig at model row — and pop into a few model homes while you're at it. Ready to move? There are plenty of quick move-in homes to tour, too.

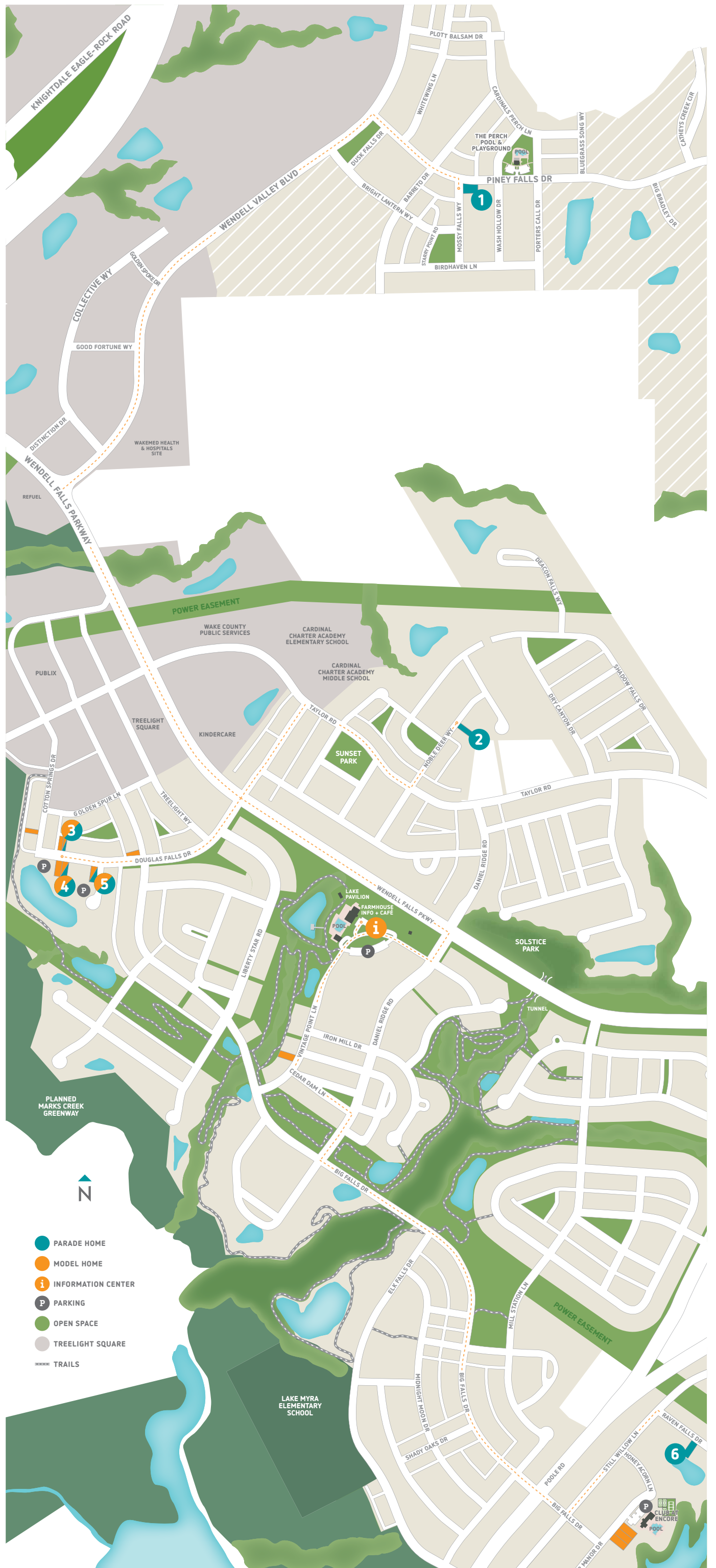
Finally, swing by Treelight Square for a bite, a drink — even a massage. (Hey, you've earned it.) Now that's a full, fun day at Wendell Falls

EXPLORE THESE PARADE HOMES

- 1** Homes By Dickerson
 Hollywood Regency
 3010 Sq.Ft./4 bed/3 bath
 2-car garage/Two-story
 136 Mossy Falls Way
- 2** Homes By Dickerson
 Misty Morn'
 2589 Sq.Ft./4 bed/3 bath
 2-car garage/Two-story
 125 Noble Deer Way
- 3** Fresh Paint by Garman Homes
 Paper
 1619 Sq.Ft./3 bed/2.5 bath
 2-car garage/Two-story
 468 Douglas Falls Drive
- 4** McNeill Burbank
 Bladen
 3044 Sq.Ft./4 bed/3.5 bath
 2-car garage/Two-story
 465 Douglas Falls Drive
- 5** Brookfield Residential
 Declan
 2337 Sq.Ft./3 bed/2.5 bath
 2-car garage/Two-story
 433 Douglas Falls Drive
- 6** Encore by David Weekley Homes
 Arrowspring
 2490 Sq.Ft./3 bed/2 bath
 2-car garage/One-story
 1737 Raven Falls Drive

i Stop by the Information Center for community information, your chance to win parade-worthy prizes and enjoy sweet treats!

WENDELL FALLS®
 BY
NEWLAND®





HOMES TO TOUR, AND MUCH MORE.

Brand new homes. Room to roam. Treelight Square.
(See you there!) Pigs with wings. More fun things.
A Parade of Homes you simply must see — in our
creatively crafted community.



There's more: scan to see
all available homes.

WENDELL FALLS[®]
BY
NEWLAND

320 Vintage Point Lane, Wendell, NC 27591
WendellFalls.com | 919.822.3060



Wendell Falls by Newland is owned in a joint venture partnership between North America Sekisui House, LLC (NASH) and Brookfield Residential, and is proudly managed by Brookfield Properties. These partners share a deep commitment to sustainable development practices and apply these core values to the vision, planning, and development of their communities. Wendell Falls by Newland is one of more than 20 communities this partnership manages together across the US. For more information, visit wendellfalls.com



NASH Wendell Falls, LLC ("Fee Owner") is the owner and developer of the Wendell Falls Community ("Community"). Fee Owner has engaged Newland Real Estate Group, LLC ("Newland") solely as the Community's property manager. North America Sekisui House, LLC ("NASH") has an interest in one of Fee Owner's members. Certain homebuilders ("Builders") unaffiliated with the Fee Owner or its related entities are building homes in the Community. Fee Owner, Newland and NASH are not co-developing, co-building or otherwise responsible for any of the obligations or representations of any Builders. Fee Owner's responsibility to the Community is limited to the development of certain infrastructure and such obligations run solely to the person buying real property directly from Fee Owner. Homebuyers at the Community waive any and all claims against Fee Owner, Newland, NASH and their affiliates arising from the purchase of a home at the Community. Map not to scale. Actual development may vary from Fee Owner's vision. No guarantee is made that development of the Community will proceed as described. This material is provided for informational purposes only. Not an offering of real property in any jurisdiction where prior registration is required unless the Community has been registered or an applicable exemption is available. Wendell Falls is a trademark of Fee Owner and may not be copied, imitated or used, in whole or in part, without prior written permission. ©2023 NASH Wendell Falls, LLC. All rights reserved. EQUAL HOUSING OPPORTUNITY (9/23)