

Whether you go public or private, charter or magnet, year-round
or traditional, there are plenty of opportunities to flourish.

So... where will your kid go to school?



a guide to our
MIDDLE SCHOOLS



WENDELL FALLS®
BY
NEWLAND

WENDELLFALLS.COM



Wendell Middle School

GRADES 6-8 / PUBLIC / TRADITIONAL CALENDAR



+ ROBOTICS AND ELECTRONICS.
At Wendell Middle School, students conceptualize, program and build products in the digital space. And clubs like DigiLit and Manga Mania inspire creative thinking, retention and hands-on application. (So it should come as no surprise that Wendell Middle School also touts an award-winning robotics team.)



+ BRING YOUR OWN DEVICE INITIATIVE.
WMS encourages students to use their personal electronic devices to increase access to technology and assist learning.

+ POSITIVE BEHAVIOR INTERVENTIONS & SUPPORTS (PBIS).
Proactive emotional and social support helps students thrive and learn critical skills to navigate change.

+ IMPRESSIVE PARENT AND STUDENT ENGAGEMENT.
Wendell Middle School has one of the most robust PTAs in the region. And the students are just as involved, with a wide variety of clubs, sports teams, dance groups and more—along with a vibrant National Junior Honor Society and award-winning marching band.



+ ARTS ABOUND.
In addition to its acclaimed theatre department, Wendell Middle School offers a variety of creative arts-based classes, including painting, sculpting and innovation.

+ POWER PLAY PROGRAM.
We believe it's just as important to exercise the body as it is the mind with a program that encourages 60 minutes of physical activity daily.





Neuse River Middle School

FORMERLY EAST WAKE MIDDLE SCHOOL
GRADES 6-8 / PUBLIC / MODIFIED CALENDAR



+

NEW YEAR, NEW SCHOOL.

East Wake Middle is opening a new state-of-the-art school with a brand-new name and a brand-new mascot by 2021.

+

TECHNOLOGY TITANS.

Neuse is a 1:1 school, which means every student is provided with their own electronic device, to boost retention and critical thinking through real-time application and collaboration. This hands-on technology equips students with the skills they need for high school, college and the workplace.

+

COLLABORATIVE LEARNING.

You won't find desks here. Students work in teams at tables to assess challenges, assign responsibilities, think critically, communicate effectively and deliver solutions to problems.

+

BUILDING RELATIONSHIPS.

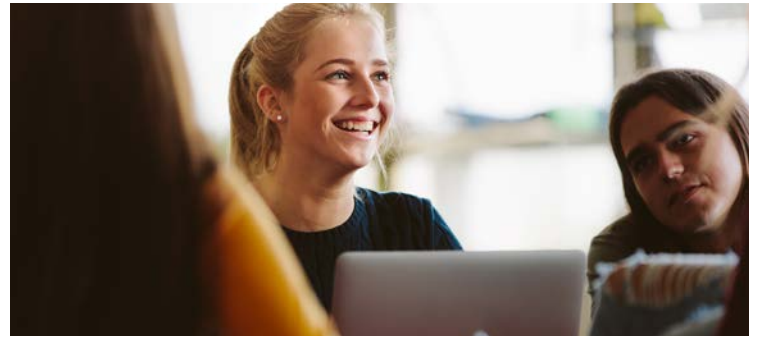
Each child is connected, supported and encouraged in a safe space through a network of peer mentors.

+

SO. MANY. CLUBS.

More than 40 clubs offer students the opportunity to participate in activities that motivate, excite and encourage them. There's also after-school tutoring—which isn't as exciting as, say, robotics club. But is just as important.





HOME OF THE EAGLES



East Wake Academy

GRADES K-12 / PUBLIC CHARTER / MODIFIED YEAR-ROUND CALENDAR



+

COLLEGE PREPARATORY SCHOOL.

East Wake Academy provides a rigorous curriculum that teaches “beyond the diploma,” helping students intentionally pursue their next steps after high school, whether that includes college, a military career or a vocation.

+

HIGH SCORES. GREAT SCHOLARSHIPS.

Along with some of the highest SAT and ACT scores in eastern Wake County, East Wake Academy students have secured coveted scholarships and acceptance letters from all North Carolina public universities and numerous private institutions across the East Coast.

+

SMALL CLASS SIZES.

Classes maintain a student-teacher ratio of 16:1 to maximize attention and personalized learning.

+

INNOVATIVE FACILITIES.

East Wake Academy is committed to providing the ideal educational environment—dedication that’s evident in the middle school’s four science and innovation labs. And that’s just one example.

+

PREMIERE STAFF.

With nearly 98% of teachers holding North Carolina teacher certifications, it’s no wonder that the school boasts awards like the North Carolina History Teacher of the Year from Daughters of the American Revolution.

+

PROVEN TRACK RECORD.

East Wake Academy boasts six years of meeting or exceeding state growth standards.

