



Wake County is a “Smart” community and is growing. Home to more than 1 million people, Wake County attracts close to 63 new residents a day. The combination of top universities and an abundance of job opportunities makes our community a magnet for smart people. Our residents and local leaders understand the value of a quality education, which is why Wake County has one of the top performing school systems in the nation.

#2 MOST EDUCATED CITY IN AMERICA – RALEIGH, NC

WalletHub.com, September 2014



OUR COMMUNITY IS PASSIONATE ABOUT EDUCATION.

MORE THAN HALF OF WAKE COUNTY'S POPULATION has a four-year degree or higher—a figure that will continue to rise with each passing year.



58.5%
Wake County



28.8%
United States



OVERVIEW

THE WAKE COUNTY PUBLIC SCHOOL SYSTEM (WCPSS) IS BOTH HIGH-PERFORMING AND FAST-GROWING.

WCPSS is the largest school district in the State of North Carolina and the 16th largest in the nation with 155,000+ students. Wake County is **one district** and covers 857 square miles. The student population has almost tripled since 1980, and will grow by an additional 20,000 students in the next four years.

Wake County encompasses **857 square miles** and has **twelve municipalities**: Apex, Cary, Fuquay-Varina, Garner, Holly Springs, Knightdale, Morrisville, Raleigh, Rolesville, Wake Forest, Wendell and Zebulon.

WCPSS has a total of **171 competitive schools**:

- **104** Elementary Schools
- **33** Middle Schools
- **27** High Schools
- **7** Specialized Program Schools

41 of the 171 schools are Magnet Schools and early college high schools for the arts, language, engineering, technology and more.

The average public school child to teacher ratio is: **15:1**



 **1840**

WCPSS has more **national board certified teachers** than any other district in the United States.



44.9%

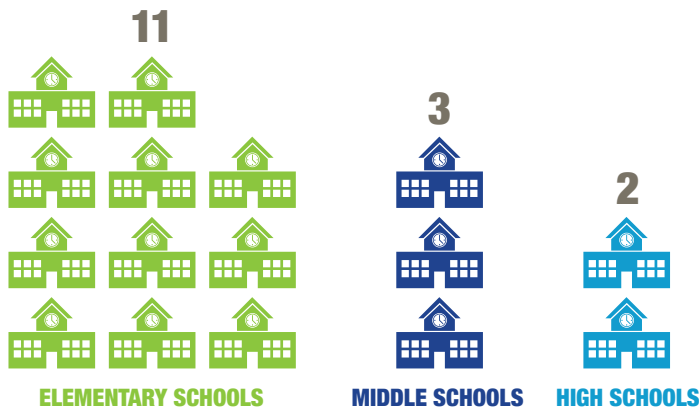
WCPSS teachers, guidance counselors, media specialists and other school professionals have an **advanced degree**.



For more information visit wcpss.net

Support for Schools

In order to accommodate growth, Wake County residents recently passed an \$810 million bond referendum that will be used to build 16 new schools, perform major renovations on six schools and support renovations on 79 existing schools. It will also support technology upgrades, life cycle equipment replacement, security, and land acquisition.



16 NEW SCHOOLS WILL BE BUILT AS PART OF THE RECENT BOND REFERENDUM

Technology upgrades will ensure all Wake County Public Schools have access to the infrastructure and equipment required to take advantage of online learning.

On May 21, 2013, the Wake County School Board approved a new student assignment policy highlighting four pillars when making assignments:

- **Student Achievement** – providing an optimal opportunity for academic success for all students
- **Stability** – students will have the opportunity to stay “grandfathered” at the same school with their siblings through the exit grades without experiencing involuntary changes in school assignment (except in the case of an opening of a new school)
- **Proximity** – base assignments will be a reasonable distance of the student’s home
- **Operational Efficiency** – assignments will optimize the use of school facilities and transportation resources

Wake County is one of only 39 counties in the nation with a AAA credit rating from all three rating agencies. This superior rating allows the county to borrow money at incredibly low interest rates.

AAA CREDIT RATING

The recently passed school bond will allow WCPSS to spend close to **\$1 BILLION ON NEW CONSTRUCTION, MAJOR RENOVATIONS AND TECHNOLOGY ACQUISITION.**

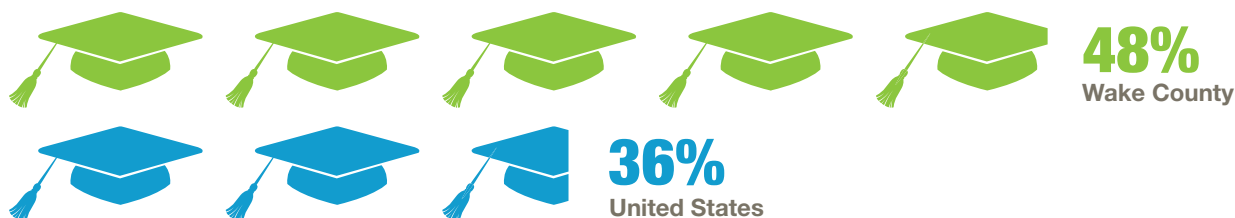


A HIGH-PERFORMING SYSTEM

A GOOD WAY TO COMPARE HIGH SCHOOL PERFORMANCE NATIONALLY is by looking at the participation level and test results in Advanced Placement (AP) Courses and other standardized tests, like the SAT

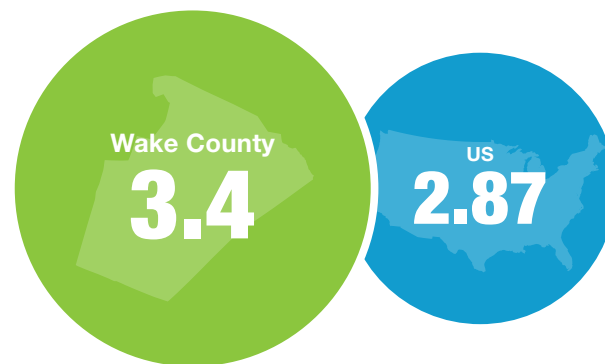
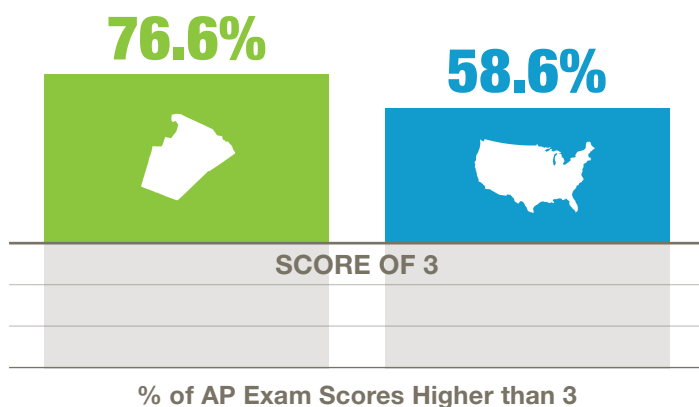
Advanced Placement Courses

Percentage of Graduating Seniors Taking AP Courses



AP Exam Scores (2012-2013)

AP Exam scores range from 1 to 5, with 3 being the minimum score required to earn college credit. More than three-quarters of WCPSS students achieve a score of 3 or higher, exceeding the national average by more than half a point.



WCPSS students score more than half a point higher than the national average.

MORE THAN **80%** OF WCPSS STUDENTS GO ON TO POST SECONDARY EDUCATION.



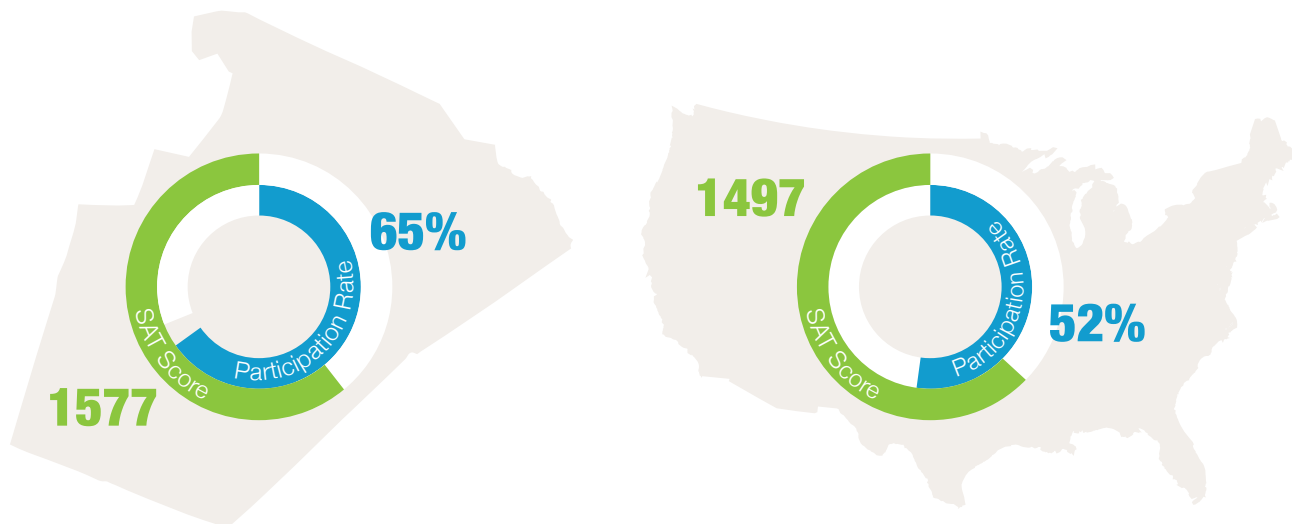
WAKE COUNTY RANKED **#1** NATIONWIDE IN 'GOLD STANDARD' TEACHERS.



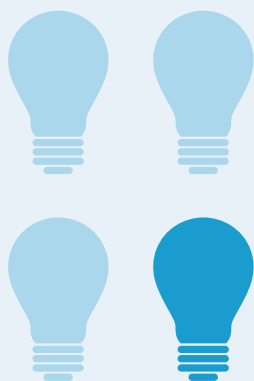
For more information visit wcpss.net

SAT Scores

WCPSS has a higher percentage than the national average of students taking the SAT and outperforms their counterparts on SAT test scores.



Source: NC Department of Public Instruction



THE ACADEMICALLY AND INTELLECTUALLY GIFTED PROGRAM provides a challenging educational program for students who perform, or show potential for performing, at remarkably high levels of accomplishment when compared to others of their age, experience or environment. The standards for inclusion in these programs are set by the State of North Carolina.

1 IN 4 of WCPSS students are in academically gifted programs—more than double the statewide average.

 **13** **NATIONALLY RANKED HIGH SCHOOLS**
Newsweek, US News & World Report



SCHOOL OPTIONS

WAKE COUNTY PROVIDES A RANGE OF CHOICES FOR FAMILIES to meet their scheduling and educational preferences. In addition to the choices within the WCPSS, there are also a wide range of options for private and charter schools.

Wake County Public Schools

Students are assigned to base school and are given up to two alternative options (traditional or year-round) based on their address of residence. Parents may also apply for placement in one of the county's magnet schools or other specialized programs. Students new to the district and incoming kindergarteners will be assigned to their base school. To be eligible for kindergarten, students must be five years old on or before August 31. Parents should visit their base school to enroll their student.

TWO-THIRDS of WCPSS schools (113) operate on a traditional calendar



ONE-THIRD of WCPSS schools (48) operate on a year-round calendar

The remaining schools operate on a modified or alternative schedule to coincide with the community college, colleges or university schedule.

TRADITIONAL CALENDAR

AUG	SEP	OCT	NOV
SU MO TU WE TH FR SA 1 2 3 4 5 6 7 8 9 10 11 12 13 14 15 16 17 18 19 20 21 22 23 24 25 26 27 28 29 30 31	SU MO TU WE TH FR SA 1 2 3 4 5 6 7 8 9 10 11 12 13 14 15 16 17 18 19 20 21 22 23 24 25 26 27 28 29 30	SU MO TU WE TH FR SA 1 2 3 4 5 6 7 8 9 10 11 12 13 14 15 16 17 18 19 20 21 22 23 24 25 26 27 28 29 30 31	SU MO TU WE TH FR SA 1 2 3 4 5 6 7 8 9 10 11 12 13 14 15 16 17 18 19 20 21 22 23 24 25 26 27 28 29 30
DEC	JAN	FEB	MAR
SU MO TU WE TH FR SA 1 2 3 4 5 6 7 8 9 10 11 12 13 14 15 16 17 18 19 20 21 22 23 24 25 26 27 28 29 30 31	SU MO TU WE TH FR SA 1 2 3 4 5 6 7 8 9 10 11 12 13 14 15 16 17 18 19 20 21 22 23 24 25 26 27 28 29 30 31	SU MO TU WE TH FR SA 1 2 3 4 5 6 7 8 9 10 11 12 13 14 15 16 17 18 19 20 21 22 23 24 25 26 27 28 29 30 31	SU MO TU WE TH FR SA 1 2 3 4 5 6 7 8 9 10 11 12 13 14 15 16 17 18 19 20 21 22 23 24 25 26 27 28 29 30 31
APR	MAY	JUN	JUL
SU MO TU WE TH FR SA 1 2 3 4 5 6 7 8 9 10 11 12 13 14 15 16 17 18 19 20 21 22 23 24 25 26 27 28 29 30	SU MO TU WE TH FR SA 1 2 3 4 5 6 7 8 9 10 11 12 13 14 15 16 17 18 19 20 21 22 23 24 25 26 27 28 29 30 31	SU MO TU WE TH FR SA 1 2 3 4 5 6 7 8 9 10 11 12 13 14 15 16 17 18 19 20 21 22 23 24 25 26 27 28 29 30	SU MO TU WE TH FR SA 1 2 3 4 5 6 7 8 9 10 11 12 13 14 15 16 17 18 19 20 21 22 23 24 25 26 27 28 29 30 31

WCPSS Sample Calendars: Unlike the traditional calendar, a student in year-round school goes for nine weeks on and then three weeks off.

YEAR-ROUND CALENDAR

AUG	SEP	OCT	NOV
SU MO TU WE TH FR SA 1 2 3 4 5 6 7 8 9 10 11 12 13 14 15 16 17 18 19 20 21 22 23 24 25 26 27 28 29 30 31	SU MO TU WE TH FR SA 1 2 3 4 5 6 7 8 9 10 11 12 13 14 15 16 17 18 19 20 21 22 23 24 25 26 27 28 29 30	SU MO TU WE TH FR SA 1 2 3 4 5 6 7 8 9 10 11 12 13 14 15 16 17 18 19 20 21 22 23 24 25 26 27 28 29 30 31	SU MO TU WE TH FR SA 1 2 3 4 5 6 7 8 9 10 11 12 13 14 15 16 17 18 19 20 21 22 23 24 25 26 27 28 29 30
DEC	JAN	FEB	MAR
SU MO TU WE TH FR SA 1 2 3 4 5 6 7 8 9 10 11 12 13 14 15 16 17 18 19 20 21 22 23 24 25 26 27 28 29 30 31	SU MO TU WE TH FR SA 1 2 3 4 5 6 7 8 9 10 11 12 13 14 15 16 17 18 19 20 21 22 23 24 25 26 27 28 29 30 31	SU MO TU WE TH FR SA 1 2 3 4 5 6 7 8 9 10 11 12 13 14 15 16 17 18 19 20 21 22 23 24 25 26 27 28 29 30 31	SU MO TU WE TH FR SA 1 2 3 4 5 6 7 8 9 10 11 12 13 14 15 16 17 18 19 20 21 22 23 24 25 26 27 28 29 30 31
APR	MAY	JUN	JUL
SU MO TU WE TH FR SA 1 2 3 4 5 6 7 8 9 10 11 12 13 14 15 16 17 18 19 20 21 22 23 24 25 26 27 28 29 30	SU MO TU WE TH FR SA 1 2 3 4 5 6 7 8 9 10 11 12 13 14 15 16 17 18 19 20 21 22 23 24 25 26 27 28 29 30 31	SU MO TU WE TH FR SA 1 2 3 4 5 6 7 8 9 10 11 12 13 14 15 16 17 18 19 20 21 22 23 24 25 26 27 28 29 30	SU MO TU WE TH FR SA 1 2 3 4 5 6 7 8 9 10 11 12 13 14 15 16 17 18 19 20 21 22 23 24 25 26 27 28 29 30 31

Sample from 2014-2016 school year

48718 AAR-Track Schedule: Sample of one track schedule from the 2014-2016 school year



For more information visit wcpss.net

Specialized Programs

Students interests and abilities differ—so Wake County has a wide range of specialized programs available including:

- Career academics including finance, health science and environmental sciences
- Early Colleges where students can earn up to two years of college credit at no cost to the student
- Leadership
- Gifted and Talented, Gifted and Talented/AIG Basics, International Studies
- International Baccalaureate, Creative Arts

WCPSS Magnet Programs are important in helping to promote diverse populations, maximize use of school facilities and provide expanded educational opportunities. WCPSS has over 40 magnet schools, 24 of which have a focus on leadership, technology, world languages, gifted and talented, language immersion/global studies and international baccalaureate.

Private and Charter Schools

Private Schools

For those interested in private schools, Wake County is home to a number of great options.

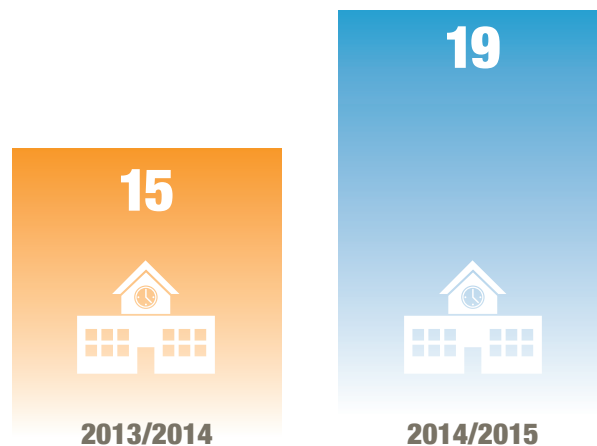
- **78** private schools in Wake County
- **16,249** students
- Religious – **42**
- Independent – **36**

Charter Schools

In addition to private schools, parents may also want to consider charter schools.

Your first question might be “What is a charter school?” The North Carolina Department of Public Instruction defines charter schools as public schools operated by private nonprofit boards. The primary funding sources for charter schools are local, state, and federal tax dollars. The schools have open enrollment with no discrimination, no religious associations, and no tuition.

Learn more at www.ncpublicschools.org/charterschools



Wake County is home to 19 charter schools, 4 of which are new for 2014-2015 school year.

Specialized services available at every school include:

- Academically and Intellectually Gifted (AIG)
- English as a Second Language (ESL)
- Special Education



Resources

Wake County Public School System

www.wcpss.net
919-431-7333

Triangle Independent School Consortium

www.tiscnc.org

Charter Schools

www.ncpublicschools.org/charterschools

Communities in Schools of Wake County

www.ciswake.org
919-834-5663

Wake County PTA Council

www.wakepta.org

Wake Education Partnership

www.Wakeedpartnership.org
919-821-7609

Review and Compare K-12 Schools

www.ncreportcards.org
www.Greatschools.org
www.Schooldigger.com

Wake County Economic Development

www.Raleigh-Wake.org

Work in the Triangle

www.WorkintheTriangle.com



Wake County Economic Development
800 S. Salisbury St. | PO Box 2978 | Raleigh, NC 27602-7099
919-664-7042 | raleigh-wake.org | workinthetriangle.com